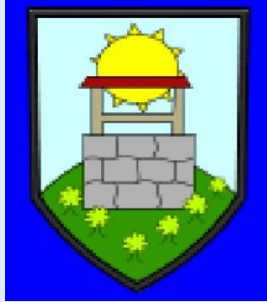
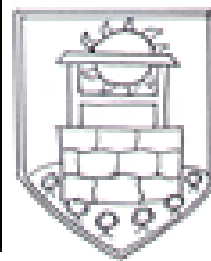


Sunningwell C of E Primary Literacy



Friendship

Trust



Perseverance

Forgiveness



What this evening is about...

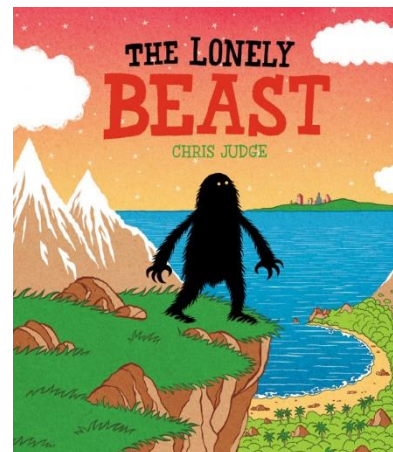
- To give an outline of what we do at Sunningwell C of E in Literacy.
- To provide you with suggestions of ways to support your child at home.

The Power of Reading

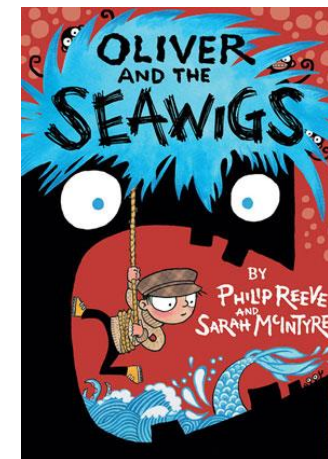
Drama
Art
Draft and edit
Talk for writing
Writing in role
Description
Poster
Journal
Poetry
Language / vocabulary

Stamina for reading
Model good reading aloud
Author techniques

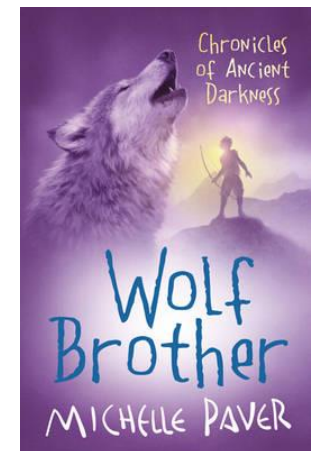
Class 2



Class 3



Class 4



Reading Comprehension

When a child reads, it means they can decode words by sounding out, blending and segmenting.

BUT comprehension of text is so much more!

Children are tested on their comprehension skills in Year 2 and Year 6 SATs by questioning their understanding.



Reading Comprehension KS1 Paper

Find and **copy one** word from the top of page 4 that means *well known*.



1 mark

(page 4)

The Little Princess reminds Tony Ross of someone. Who is it?



1 mark

(pages 4 and 5)

Complete the table with the names of the writers and the characters they write about.

| Character | Writer |
|------------------|-----------------|
| | Francesca Simon |
| Dr Xargle | |
| Mr Toffy | |



1 mark

(page 6)

There are two men in the story.

Which man is kind and which man is greedy?

kind _____

greedy _____



(page 9)

Give **two** things the greedy man does that tell you he could not wait for the seed to grow.

1. _____

2. _____



2 marks

Reading Comprehension KS2 Paper

Look at the paragraph beginning: *Glancing nervously...*

Find and copy one word meaning relatives from long ago.

1 mark

Look at page 4.

How can you tell that Maria was very keen to get to the island?

1 mark

The struggle had been between two rival families...

Which word most closely matches the meaning of the word *rival*?

Tick **one**.

equal

neighbouring

important

competing

...they crossed the glassy surface of the lake.

Give **two** impressions this gives you of the water.

1. _____

2. _____

2 marks

(a) What evidence is there of Martine being stubborn in the way she behaved with her grandmother?

Give **two** points.

1. _____

2. _____

2 marks

Do you think that Martine will change her behaviour on future giraffe rides?

Tick **one**.

yes

no

maybe

Explain your choice fully, using evidence from the text.

| |
|---|
| <hr/> <hr/> <hr/> <hr/> <hr/> <hr/> <hr/> <hr/> <hr/> <hr/> <hr/> <hr/> |
|---|

3 marks



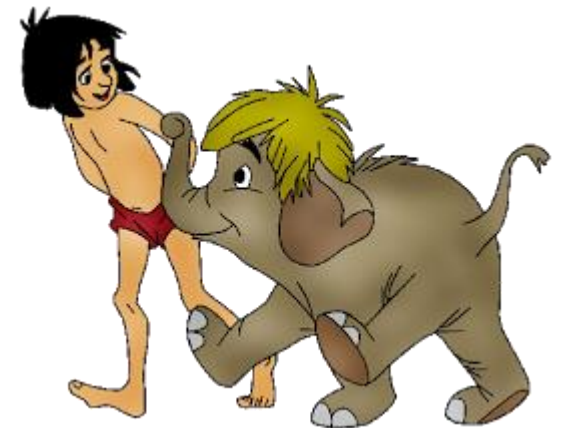
Partnership

**School &
Home**



Top Tips At Home

- Choose a quiet time
- Maintain the flow
- Visit the local library
 - Little and often
 - Variety of texts
 - Make it FUN!



Useful links

<https://www.oxfordowl.co.uk/reading-owl/find-a-book>

<http://www.booktrust.org.uk/books/children/>

If you are free to come and support some of our young readers in school then please fill in our sign up sheet.